

# COMhawk<sup>®</sup> xt light

Low-Cost telematic ECU





# COMhawk® xt light

COMhawk® xt is an embedded application ECU for telemetry and diagnostic tasks. The cost-optimized light version enables simple telematics tasks with an optimal price-performance ratio.

## Key Features



**1× CAN interface acc. to ISO 11898 with J1939 Protocol Support**



**2G/LTE**



**FOTA (Flash-over-the-air)**



**Protection class IP67**

## Interfaces and mobile communication

The new COMhawk® xt light has one CAN channel with J1939 protocol support. A 2G/LTE mobile radio connection is available for wireless data exchange. This can be used to run FOTA applications, which can be managed by our IoT Device Manager.

## Wide range of applications

COMhawk® xt light can be used in various applications of mobile machines, but also in stationary machines. From a simple IoT gateway, which transmits the recorded operating data wirelessly, to a central communication, telemetry and diagnostic gateway, the range of applications is wide. The extended temperature range from  $-30^{\circ}\text{C}$  up to  $+70^{\circ}\text{C}$  and the compact housing with IP67 protection guarantee comprehensive protection. The embedded operating system also offers a simple and optimal basis for creating OEM applications without increased effort and costs.

## Technical Data

CPU	32-bit microcontroller
CAN	1x CAN interface acc. to ISO 11898
Further protocols	J1939
2G/LTE	GSM/GPRS/EDGE/LTE
Antenna connection	internal
Housing	IP67
Dimensions (l×w×h)	approx. 120 mm × 111 mm × 34 mm
Weight	260 g
Operating temperature	−30 °C up to +70 °C (higher temperature class on request)
Storage temperature	−40 °C up to +85 °C
Power supply	6–32 V DC



## IoT Device Manager

The IoT Device Manager is a cloud-based tool for simple and clear management of your telematic units in the field. You can group and structure your devices via drag and drop and can manage software packages for over-the-air updates.

### Collect live data during vehicle operation or flash software over-the-air via:

- Mobile networks (2G/LTE)

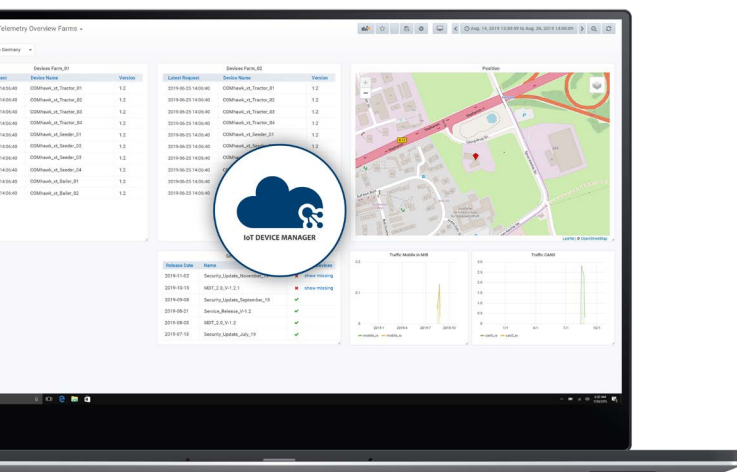
### Store telemetry data for further analysis to support:

- QA statistics
- Usage statistics
- Servicing intervals
- Vehicle Lifecycle Support
- After sales offerings

## IoT Analytics Manager

The IoT Analytics Manager is a cloud-based tool for storing and visualizing your operation data (big data).

An OEM is able to analyze and evaluate data in different configurable dashboards, widgets and histograms. The data amount and traffic can be individually set up for different use cases. Furthermore, a live data integration for real-time monitoring is also possible and can be individually configured by the customer.





**Mobile Automation**



**Industrial Automation**



**Diagnostics**



**Connectivity**

**We are looking forward to your enquiry!**

**Sontheim Industrie Elektronik GmbH**

Georg-Krug-Straße 2  
D-87437 Kempten  
Phone: +49 (0)831 575900-0  
Fax: +49 (0)831 575900-72  
Email: [info@s-i-e.de](mailto:info@s-i-e.de)

**Sontheim Electronic Systems L.P.**

201 West 2nd Street  
Davenport, IA 52801, USA  
Phone: +1 563 888 1471  
Email: [info@sontheim-esys.com](mailto:info@sontheim-esys.com)

[www.s-i-e.de](http://www.s-i-e.de)